

0CNP2-M94800EN

Directions for the Parts Catalog.

1. The parts stipulated in this Parts Catalog are not necessarily standard equipped parts.
2. Parts may change without prior notice.
3. The following is an example of the Parts Catalog format.

OCF10-G21601		29. FUEL INJECTION PUMP(W/BOOST)									
REF.	LEV.	PARTS NO.	DESCRIPTION	(A)	(B)	(C)	(D)	(E)	(F)	I	R
1	1	729595-51390	FUEL INJECTION PUMP	1	1	1	1	1			1
1-1	1	729595-51391	FUEL INJECTION PUMP	1	1	1	1	1		N	1
		(A=E00185) (B=E00200)									
3	2	26022-060162	SCREW M 6X 16	9	9	9	9	9			
3-1	2	26022-060162	SCREW M 6X 16	4	4	4	4	4		K	
		(A=E00156) (B=E00156) (C=E00156) (D=E00156) (E=E00156)									
4	2	129470-51040	CAMSHAFT	1	1	1	1	1			
5	2	122710-51050	BEARING, ROLLER	2	2	2	2	2			
6	2	129470-51060	RETAINER	1	1	1	1	1			

Remarks
(1) BOOST COMPEMSATOR TYPE. OPTIONAL PART, TO E00155,(4JH-DT, 4JH-DTZ

① Ref. No.

The Ref. No. listed may not be in accordance with the illustration Ref. No.

(Ex.) Illustration No.

List Ref No.

1

1

(Before change)

1-1

(After change)

For interchangeable symbols N, R and K, illustrations for new parts may be abbreviated.

② Lev. (Level)

Level indication

The numbers below indicate the level of relativity towards the main part.

1 ----- Main parts (Assembly parts)

2 ----- Sub component included in " 1 ".

3 ----- Sub component included in " 2 ".

Note) Parts that are not for sale are partially illustrated but not listed.

③ Interchangeability Mark

When a part change takes place, one of the following interchangeability symbols is indicated beside the part.

Symbol	Interchangeability	Contents note
N	Old $\begin{matrix} \leftarrow \text{Yes} \\ \text{No} \rightarrow \end{matrix}$ New	New Part is interchangeable for Old Part but Old Part is not interchangeable for New Part.
Q	Old $\begin{matrix} \leftarrow \text{No} \\ \text{Yes} \rightarrow \end{matrix}$ New	New Part is not interchangeable for Old Part but Old Part is interchangeable for New Part.
R	Old $\begin{matrix} \leftarrow \text{Yes} \\ \text{Yes} \rightarrow \end{matrix}$ New	New/ Old Parts are both interchangeable.
S	Old $\begin{matrix} \leftarrow \text{No} \\ \text{No} \rightarrow \end{matrix}$ New	New/ Old Parts are both not interchangeable.
W		Part newly added.
Z		Part discontinued.
F		Not interchangeable by a single part but interchangeable together with related parts.
K		Changes only for used parts quantities.

④ Effective Machine No.

When a part changes, the effective Machine No. will be indicated in the (A)-(F) column.

Product Symbol	Product No.	Product Symbol	Product No.
C	Clutch No. Compressor No.	F	Machine No. (Agricultural Equip.)
D	Drive No.	M	Machine No.
E	Engine No.		

Note 1) A date may follow the symbol. (Ex.) 1996.01

Note 2) " XXXXX " and " ZZZZZ " are for parts that could not be predicted or for engine models that could not be identified.

Note 3) (A=E00185) is the E (Engine Serial Number) for the column (A) model (in this case 4JH-DT) after the parts design change.

⑤ Remarks Mark

Figures or alphabets (symbols) are entered in the remarks column.

The comments (remarks) on parts that are indicated at the bottom of the illustration are the same symbols as those stated above.

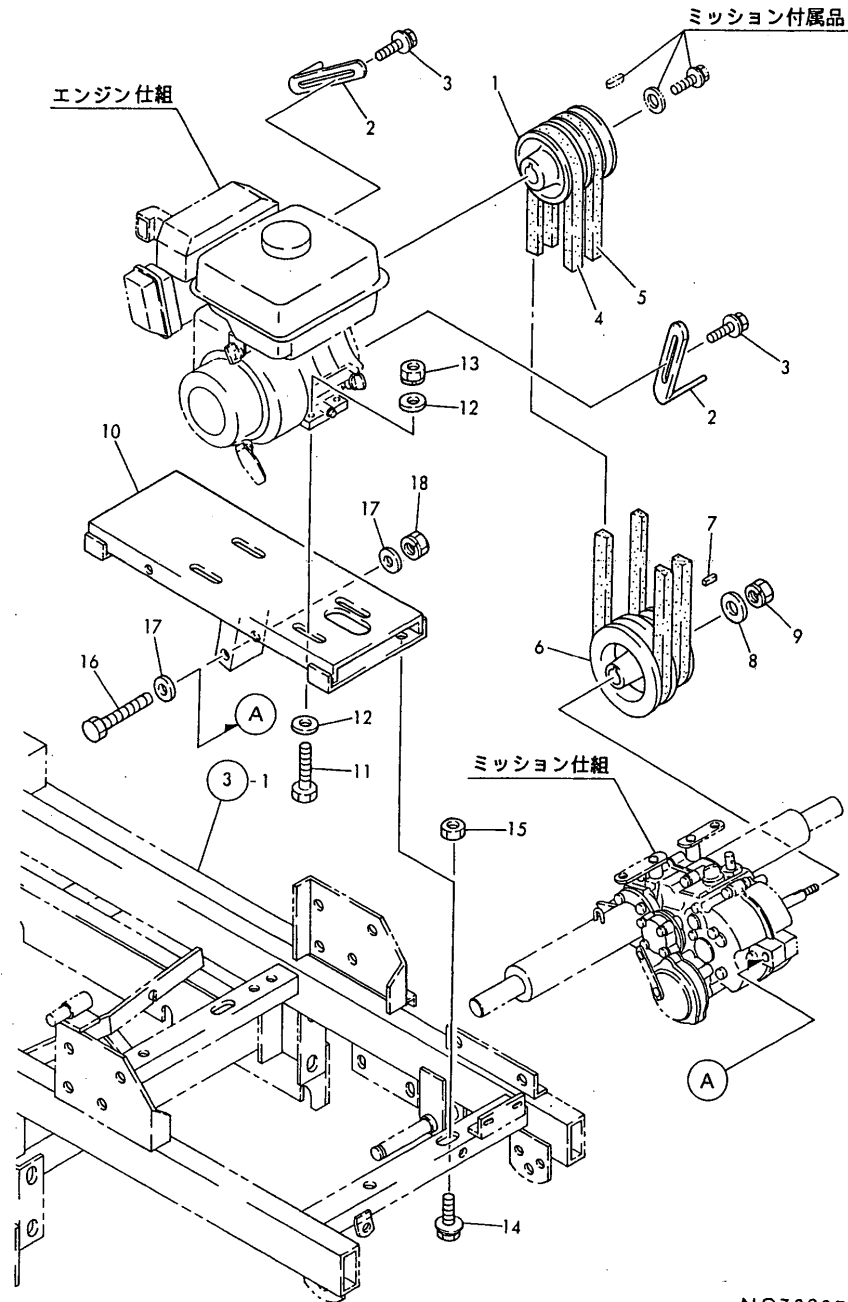
Contents

Fig. No.	Fig. Name
PULLEY & TENSION SECTION	
1.	TENSION ARM
2.	PULLEY
FRAME SECTION	
3.	BODY FRAME
TRAVELING SECTION (1)	
4.	IDLER
5.	TRACK ROLLER
CONTROL SECTION	
6.	HANDLE
7.	TRAVEL LEVER
8.	BRAKE LEVER
9.	MAIN CHANGE LEVER
10.	SIDE CLUTCH LEVER
PLATFORM CARRIER SECTION	
11.	HYDRAULIC PUMP
12.	HYDRAULIC CYLINDER
13.	PLATFORM CARRIER
14.	PLATFORM CARRIER

Fig. No.	Fig. Name
TOOLS,ACCESSORIES & LABELS SEC	
15.	LABELS
16.	TOOLS & ACCESSORIES

Fig.2. PULLEY

2. PULLEY



(A)=MCG131H
(B)=MCG131D
(C)=

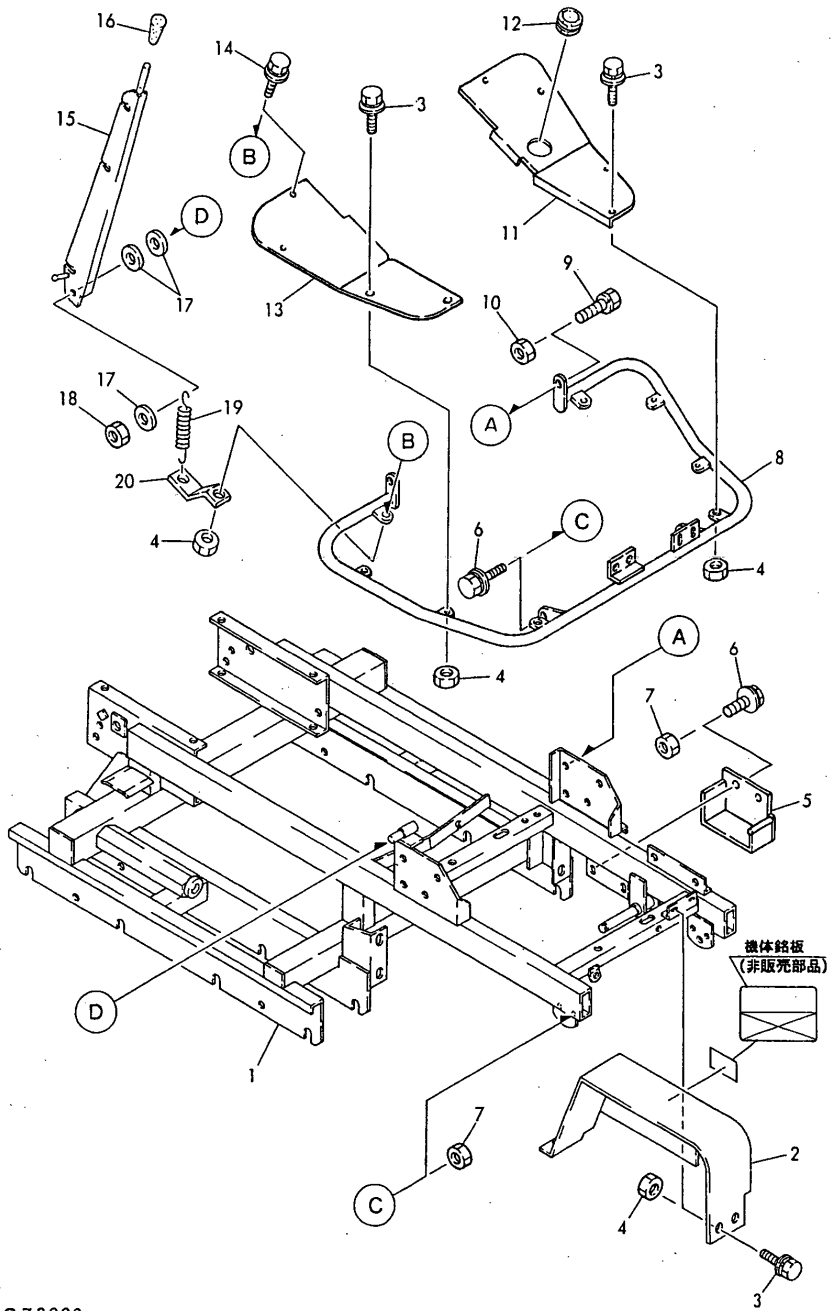
(D)=
(E)=
(F)=

No.	Lev.	Parts No.	Description	Q'ty						I	R
				(A)	(B)	(C)	(D)	(E)	(F)		
1	1	1N1277-21000	V-PULLEY,ENGINE	1	1						
2	1	1N1270-22080	GUIDE 80,BELT	2	2						
3	1	26018-080164	BOLT M 8X 16	2	2						
4	1	25123-003101	V-BELT, B31H	1	1						
5	1	25123-003001	V-BELT, B30H	1	1						
6	1	1N1361-21010	V-PULLEY,TRANSMISN	1	1						
7	1	22551-050250	KEY, 5X 25	1	1						
8	1	22137-100000	WASHER, 10	1	1						
9	1	26051-100002	NUT, M10	1	1						
10	1	1N1364-16000	BASE,ENGINE	1	1						
11	1	26117-080452	BOLT M 8X 45	4	4						
12	1	22137-080000	WASHER, 8	8	8						
13	1	26051-080002	NUT, M8	4	4						
14	1	26018-100254	BOLT M10X 25	4	4						
15	1	26367-100002	NUT, M10	4	4						
16	1	26117-100804	BOLT, M10X 80 PLATED	1	1						
17	1	22137-100000	WASHER, 10	2	2						
18	1	26051-100002	NUT, M10	1	1						

NO73997

Fig.3. BODY FRAME

3. BODY FRAME



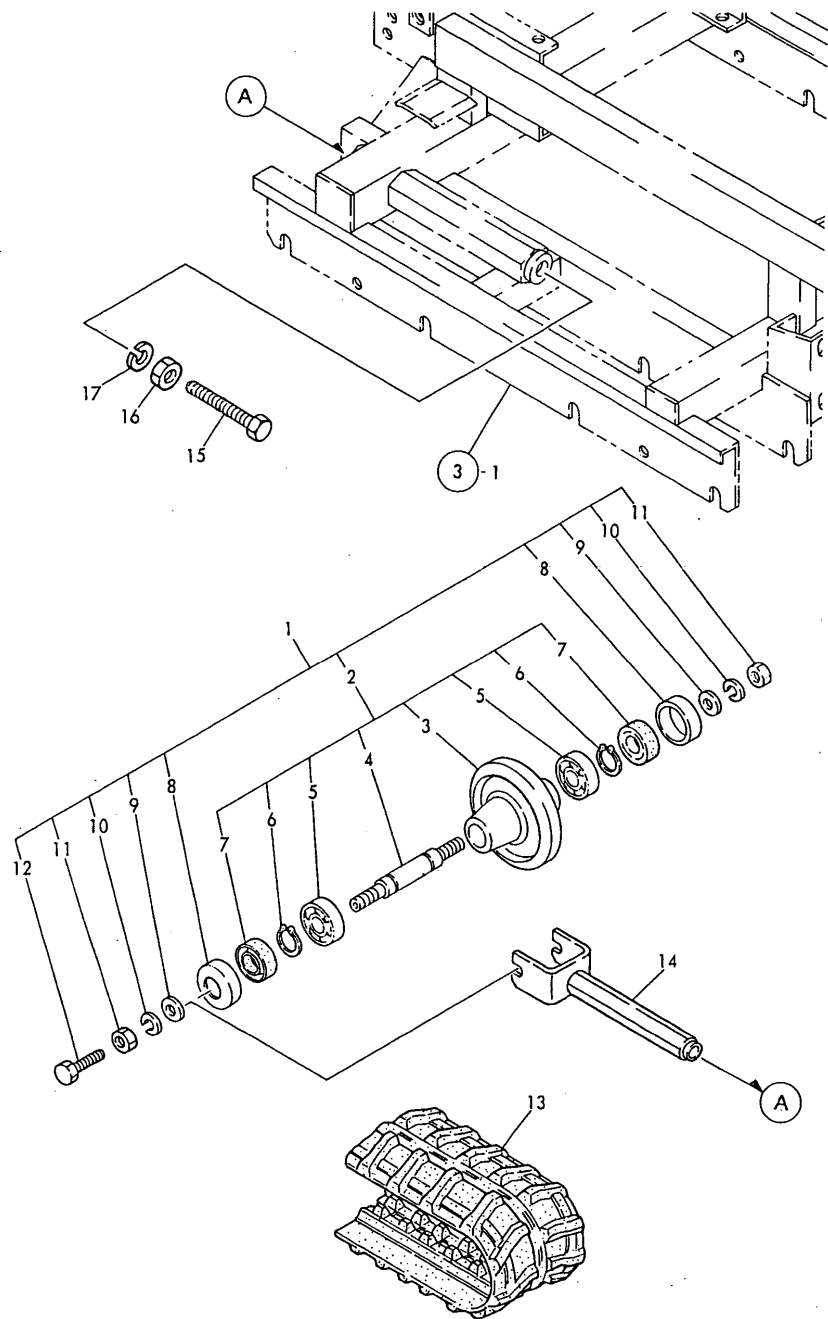
(A)=MCG131H
(B)=MCG131D
(C)=

(D)=
(E)=
(F)=

No.	Lev.	Parts No.	Description	Q'ty						I	R
				(A)	(B)	(C)	(D)	(E)	(F)		
1	1	1N1364-31000	FRAME,BODY	1	1						
2	1	1N1364-58020	COVER,PULLEY	1	1						
3	1	1N1291-58080	BOLT 6X16 W/P&SW.	11	12						
4	1	26367-060002	NUT, M6	12	12						
5	1	1N1364-58050	COVER,TRANSM.PULLEY	1	1						
6	1	26018-080204	BOLT M 8X 20	4	4						
7	1	26367-080002	NUT, M8	4	4						
8	1	1N1361-54001	STEP A	1	1						
9	1	26018-100254	BOLT M10X 25	2	2						
10	1	26367-100002	NUT, M10	2	2						
11	1	1N1361-54040	STEP D	1	1						
12	1	1N1185-53000	GROMMET 70	1	1						
13	1	1N1361-54030	STEP C	1	1						
14	1	26018-060204	BOLT, M6X 20	1	1						
15	1	1N1361-64371	DEVICE A,LOCKING	1							
16	1	1N1101-44020	GRIP 10,BRAKE	1							
17	1	22137-120000	WASHER, 12	3							
18	1	26347-120002	NUT, M12	1							
19	1	1N1151-53010	SPRING 16.5X76,TENS.	1							
20	1	1N1361-54050	HOOK,SPRING	1							

Fig.4. IDLER

4. IDLER



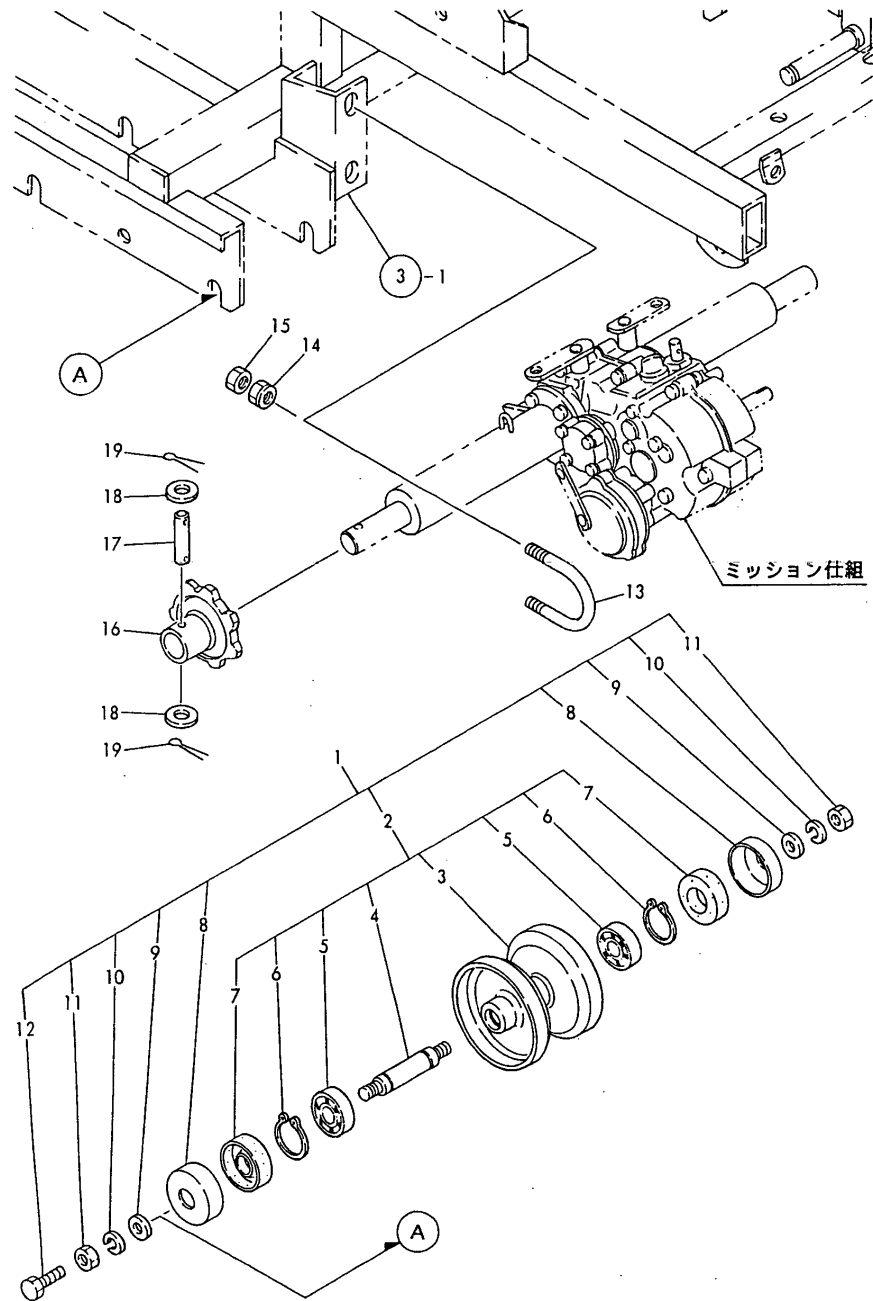
(A)=MCG131H
(B)=MCG131D
(C)=

(D)=
(E)=
(F)=

No.	Lev.	Parts No.	Description	Q'ty						I	R
				(A)	(B)	(C)	(D)	(E)	(F)		
1	1	7N1277-35011	FLOAT RING SET	2	2						
2	2	7N1277-35001	FLOAT RING ASSY.	2	2						
3	3	1N1277-35000	RING,FLOAT	2	2						
4	3	1N1277-35011	SHAFT	2	2						
5	3	24101-060044	BEARING, BALL 6004	4	4						
6	3	22242-000200	RING, 20	4	4						
7	3	24421-204208	SEAL, OIL TC204208	4	4						
8	2	1N1240-35030	BASE,STAND	4	4						
9	2	22137-160000	WASHER, 16	4	4						
10	2	22217-160000	WASHER, SPRING 16	4	4						
11	2	26717-160002	NUT, M16	4	4						
12	2	26117-060084	BOLT, M6X 8 PLATED	2	2						
13	1	1N1270-37010	CRAWLER 180X72X34,RB	2	2						
14	1	1N1101-35020	BRACKET,FLOAT RING	2	2						
15	1	26117-161504	BOLT, M16X150 PLATED	2	2						
16	1	26717-160002	NUT, M16	2	2						
17	1	22217-160000	WASHER, SPRING 16	2	2						

Fig.5. TRACK ROLLER

5. TRACK ROLLER



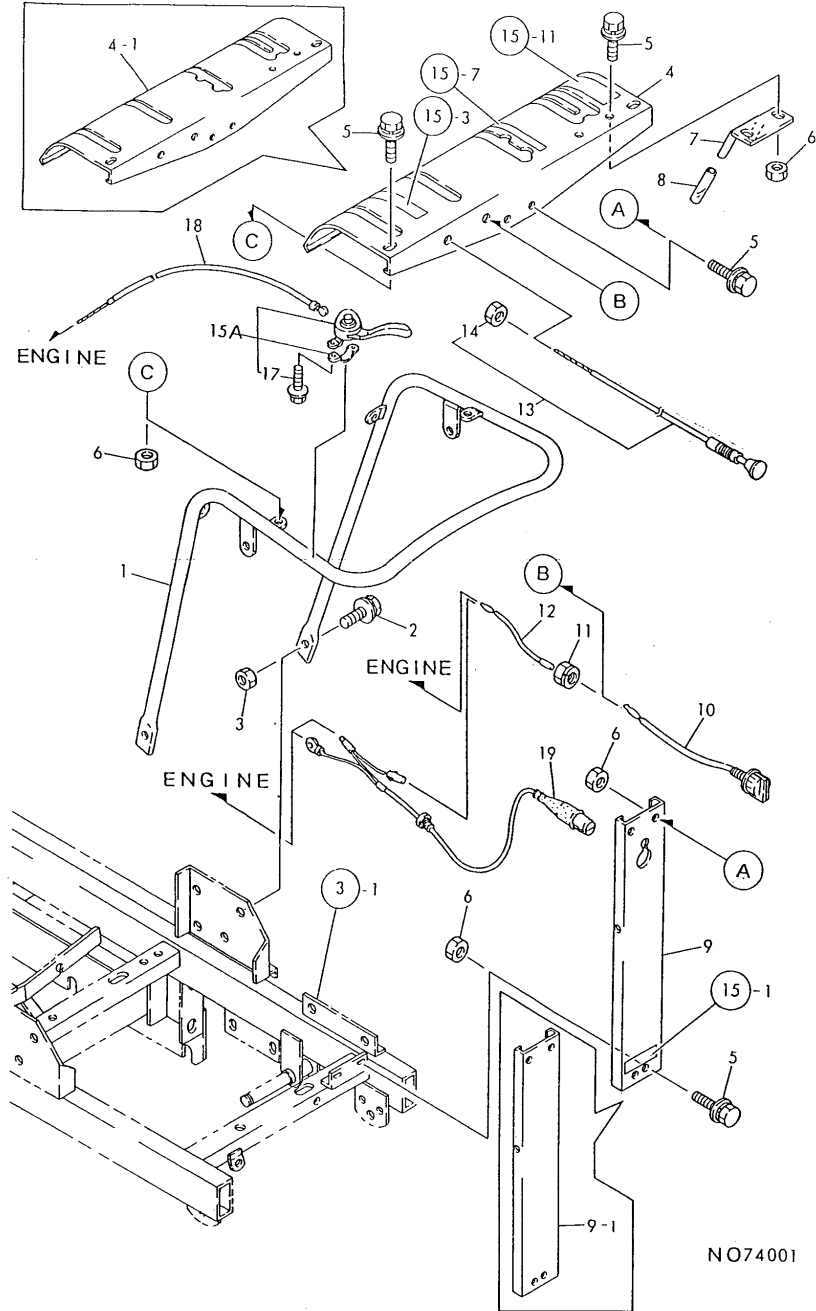
(A)=MCG131H
(B)=MCG131D
(C)=

(D)=
(E)=
(F)=

No.	Lev.	Parts No.	Description	Q'ty						I	R
				(A)	(B)	(C)	(D)	(E)	(F)		
1	1	7N1361-36011	LWR.TRANK ROLLER SET	8	8						
2	2	7N1361-36001	LWR.TRANK ROLLER ASY	8	8						
3	3	1N1361-36000	ROLLER,LOWER TRANK	8	8						
4	3	1N1361-35011	SHAFT	8	8						
5	3	24101-060044	BEARING, BALL 6004	16	16						
6	3	22242-000200	RING, 20	16	16						
7	3	24421-204208	SEAL, OIL TC204208	16	16						
8	2	1N1240-35030	BASE,STAND	16	16						
9	2	22137-160000	WASHER, 16	16	16						
10	2	22217-160000	WASHER, SPRING 16	16	16						
11	2	26717-160002	NUT, M16	16	16						
12	2	26117-060084	BOLT, M6X 8 PLATED	8	8						
13	1	1N1210-35100	U-BOLT	2	2						
14	1	26052-100002	NUT, M10	4	4						
15	1	26757-100002	NUT, LOCK M10	4	4						
16	1	1N1360-35000	SPROCKET	2	2						
17	1	1N1140-35010	PIN,SPROCKET	2	2						
18	1	22137-100000	WASHER, 10	4	4						
19	1	22417-250250	PIN, COTTER 2.5X25	4	4						

Fig.6. HANDLE

6. HANDLE



NO74001

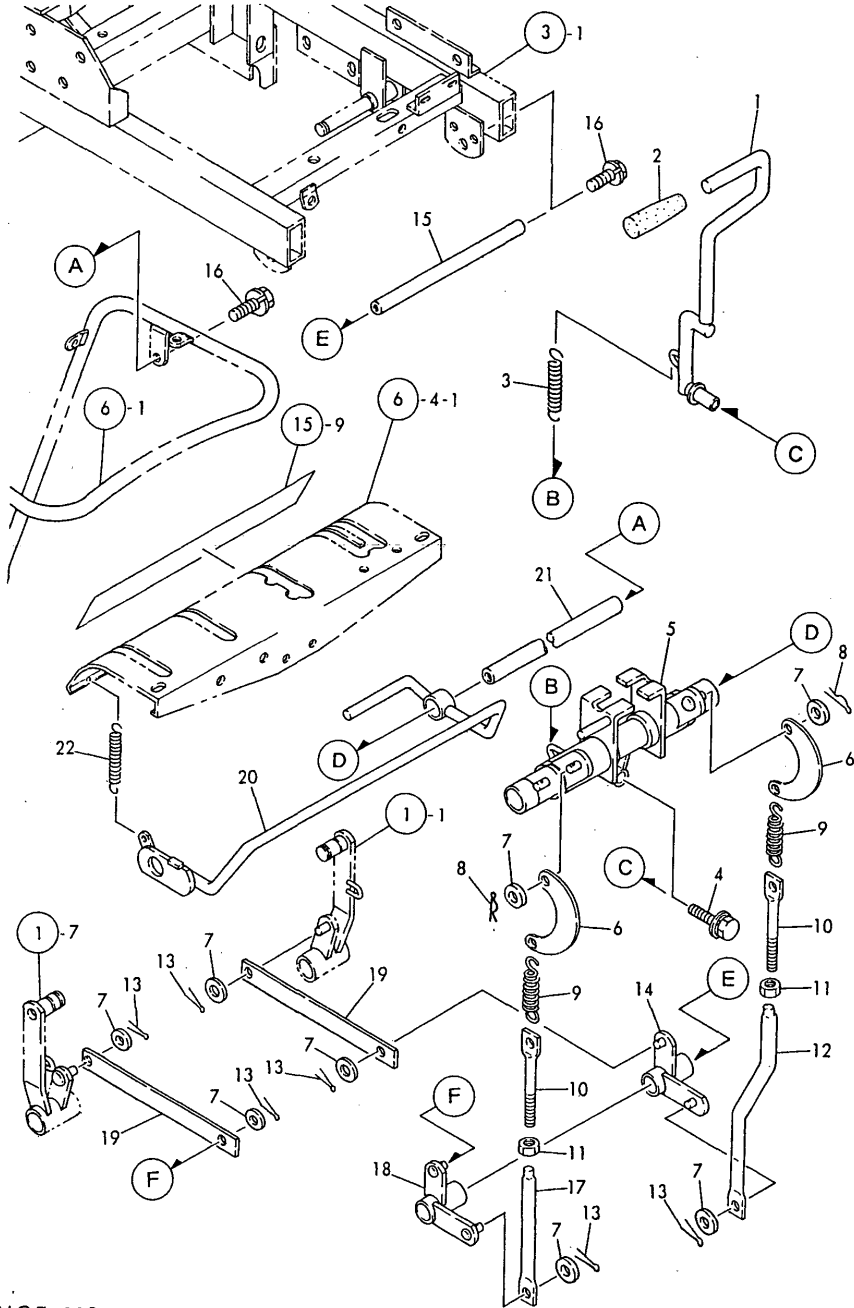
(A)=MCG131H
(B)=MCG131D
(C)=

(D)=
(E)=
(F)=

No.	Lev.	Parts No.	Description	Q'ty						I	R
				(A)	(B)	(C)	(D)	(E)	(F)		
1	1	1N1364-47000	HANDLE, GOVERNOR	1	1						
2	1	26018-100254	BOLT M10X 25	2	2						
3	1	26367-100002	NUT, M10	2	2						
4	1	1N1364-58000	PANEL, CONTROL	1	1						
4-1	1	1N1364-58001	PANEL, CONTROL	1	1						S
		(A=F010413) (B=F010413)									
5	1	1N1291-58080	BOLT 6X16 W/P&SW.	10	10						
6	1	26367-060002	NUT, M6	10	10						
7	1	1N1364-41110	STOPPER	1	1						
8	1	1N1277-42270	HOSE, VINYL	2	2						
9	1	1N1364-47030	STAY, HANDLE	1	1						
9-1	1	1N1364-47031	STAY, HANDLE	1	1						S
		(A=F010906) (B=F010901)									
10	1	1A1470-40900	SWITCH, STOP	1	1						
11	1	26051-080002	NUT, M8	1	1						
12	1	1N1431-52000	WIRE 650, STOP LEAD	1	1						
13	1	1N1277-51010	WIRE, CHOKE	1	1						
14	2	26717-100002	NUT, M10	1	1						
15A	1	1N1296-47040	LEVER, THROTTLE	1	1						
17	2	26014-060259	BOLT, M6X 25	2	2						
18	1	1N3500-51010	WIRE, THROTTLE	1	1						
19	1	1N1291-51030	SWITCH, SAFETY	1	1						
19-1	1	1N1291-51031	SWITCH, SAFETY	1	1						R
		(A=F010902) (B=F010902)									

Fig.7. TRAVEL LEVER

7. TRAVEL LEVER



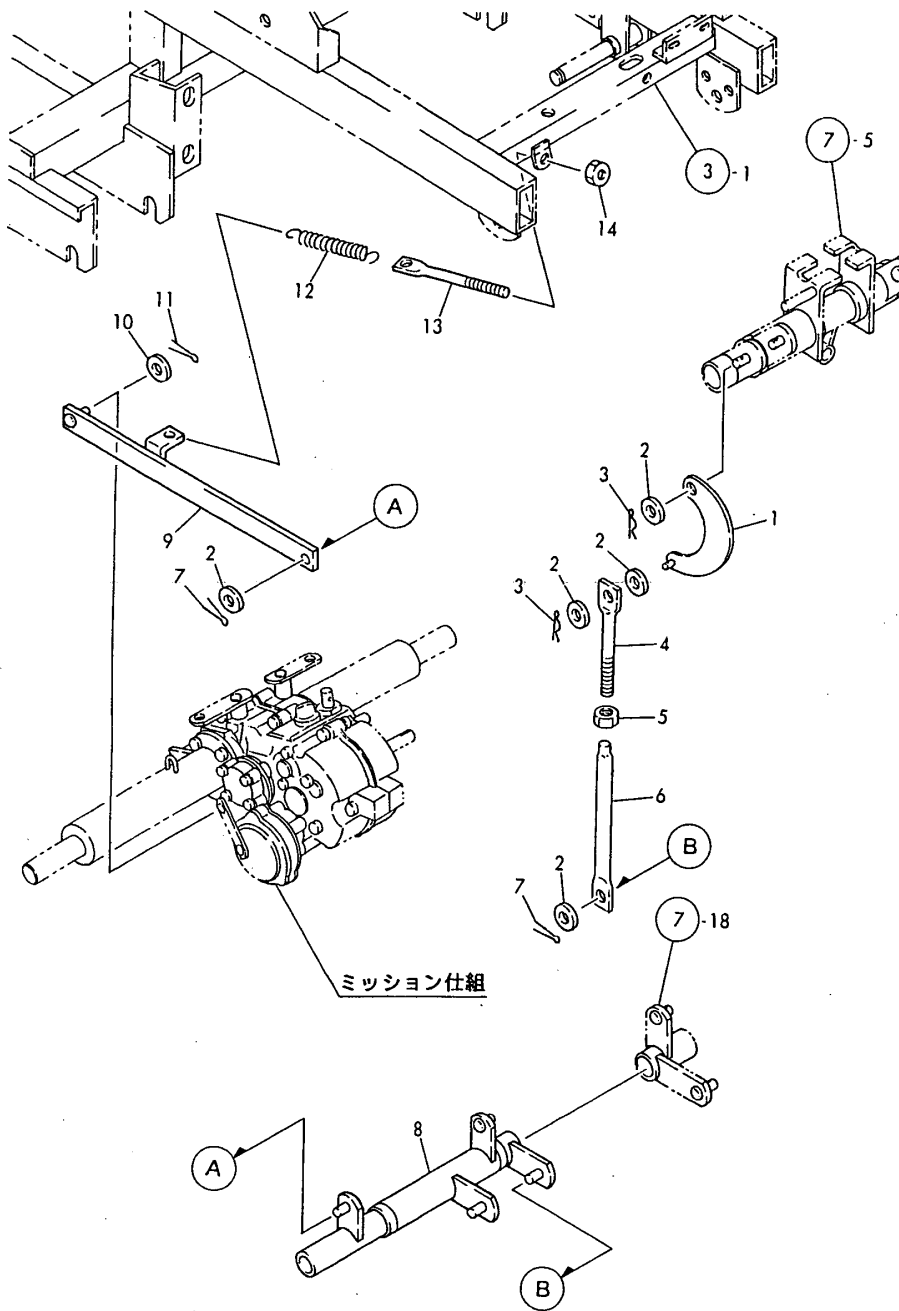
(A)=MCG131H
(B)=MCG131D
(C)=

(D)=
(E)=
(F)=

No.	Lev.	Parts No.	Description	Q'ty						I	R
				(A)	(B)	(C)	(D)	(E)	(F)		
1	1	1N1364-41050	LEVER, CLUTCH	1	1						
2	1	1N1101-44030	GRIP 10,BRAKE RED	1	1						
3	1	1N1190-45000	SPRING 11X72.5,TENS.	1	1						
4	1	26018-060164	BOLT M 6X 16	1	1						
5	1	1N1364-41070	LINK,CLUTCH	1	1						
6	1	1N1240-42050	LINK,CRESCENT	2	2						
7	1	22137-080000	WASHER, 8	8	8						
8	1	22360-080000	SNAP PIN 8	2	2						
9	1	1N1210-53030	SPRING 21.5X78,TENS.	2	2						
10	1	1N1360-22090	SCREW 8X94,ADJUST	2	2						
11	1	26757-080002	NUT, LOCK M8	2	2						
12	1	1N1364-41160	ROD, CLUTCH	1	1						
13	1	22417-250200	PIN, COTTER 2.5X20	6	6						
14	1	1N1362-42210	LINK H,CLUTCH	1	1						
15	1	1N1361-42130	SHAFT B	1	1						
16	1	26018-100204	BOLT M10X 20	4	4						
17	1	1N1362-42110	ROD A,CLUTCH	1	1						
18	1	1N1362-42200	LINK L,CLUTCH	1	1						
19	1	1N1362-42220	ROD,TENSION	2	2						
20	1	1N1364-41120	LEVER, SAFETY	1	1						
21	1	1N1277-42260	SHAFT,FULCRUM	1	1						
22	1	1N1151-53000	SPRING 12.5X54,TENS.	1	1						

Fig.8. BRAKE LEVER

8. BRAKE LEVER



(A)=MCG131H
(B)=MCG131D
(C)=

(D)=
(E)=
(F)=

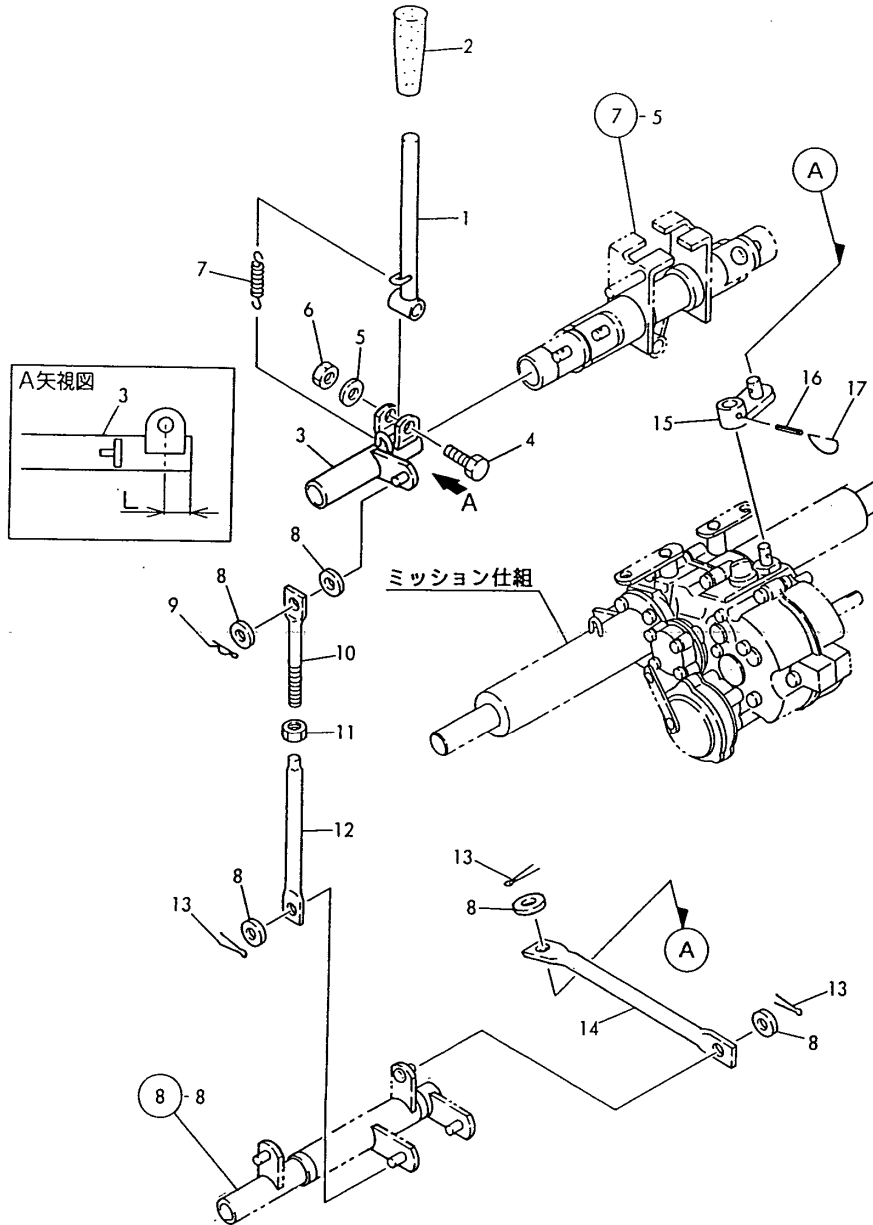
No.	Lev.	Parts No.	Description	Qty						I	R
				(A)	(B)	(C)	(D)	(E)	(F)		
1	1	1N1360-22130	LINK,CRESCENT	1	1						
2	1	22137-080000	WASHER, 8	5	5						
3	1	22360-080000	SNAP PIN 8	2	2						
4	1	1N1110-42001	ROD A,CLUTCH BRAKE	1	1						
5	1	26757-080002	NUT, LOCK M8	1	1						
6	1	1N1360-22141	ROD,CLUTCH	1	1						
7	1	22417-250200	PIN, COTTER 2.5X20	2	2						
8	1	1N1364-41030	LINK,CONTROL	1	1						
9	1	1N1364-41170	ROD,BRAKE	1	1						
10	1	22137-060000	WASHER, 6	1	1						
11	1	22417-200160	PIN, COTTER 2.0X16	1	1						
12	1	1N3510-42090	SPRING 16.5X93,TENS.	1	1						
13	1	1N1360-22090	SCREW 8X94,ADJUST	1	1						
14	1	26757-080002	NUT, LOCK M8	1	1						

Fig.9. MAIN CHANGE LEVER

(A)=MCG131H
(B)=MCG131D
(C)=

(D)=
(E)=
(F)=

9. MAIN CHANGE LEVER



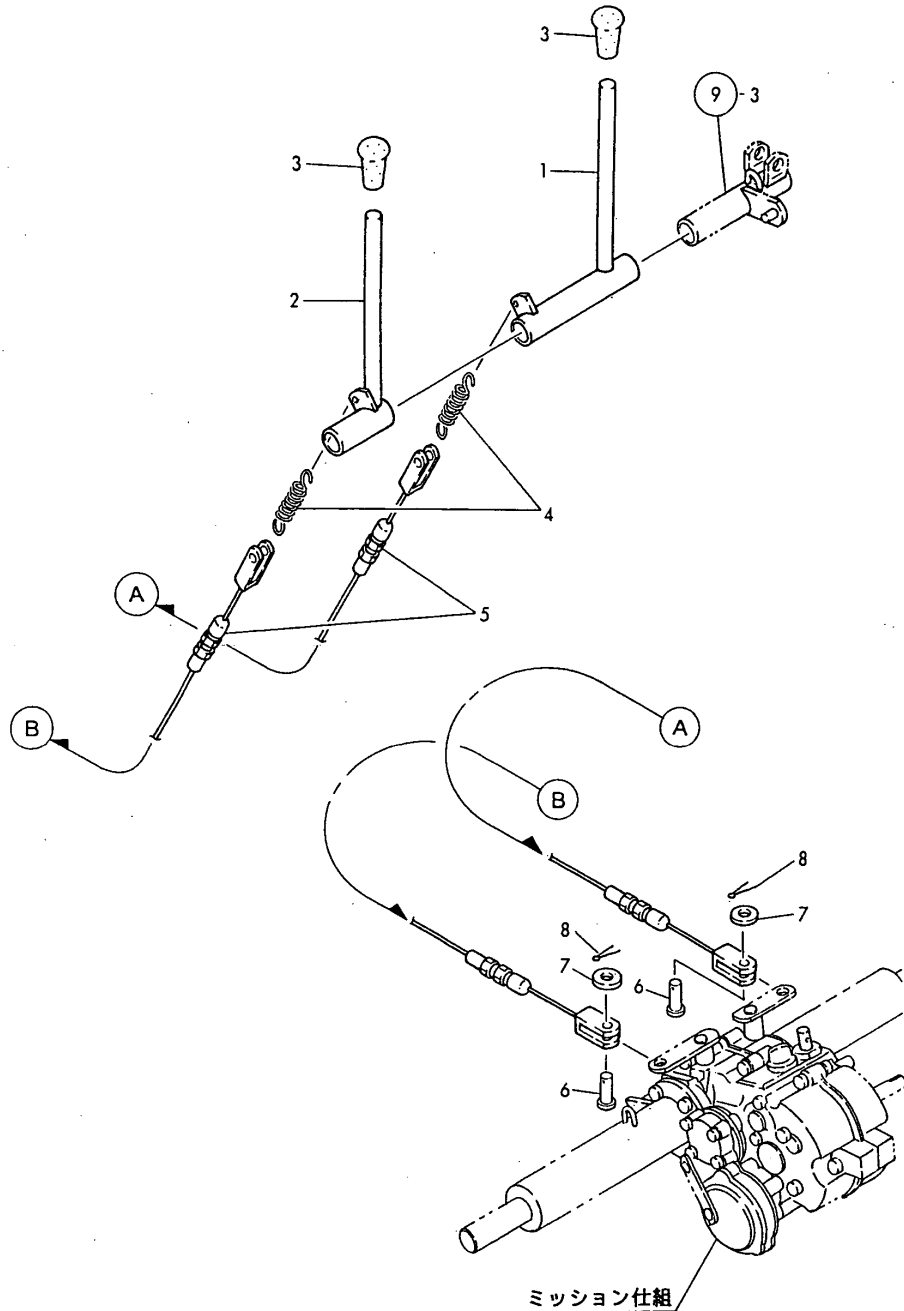
No.	Lev.	Parts No.	Description	Q'ty						I	R
				(A)	(B)	(C)	(D)	(E)	(F)		
1	1	1N1364-41000	LEVER,CHANGE	1	1						
2	1	1N1101-44020	GRIP 10,BRAKE	1	1						
3	1	1N1364-41020	LINK,CHANGE	1	1						
3-1	1	1N1364-41021	LINK,CHANGE	1	1						S 1
		(A=F010413) (B=F010413)									
4	1	26117-100504	BOLT M10X 50 PLATED	1	1						
5	1	22137-100000	WASHER, 10	1	1						
6	1	26347-100002	NUT, M10	1	1						
7	1	1N1366-53000	SPRING 12.5X34.5,TNS	1	1						
8	1	22137-080000	WASHER, 8	5	5						
9	1	22360-080000	SNAP PIN 8	1	1						
10	1	1N1360-22090	SCREW 8X94,ADJUST	1	1						
11	1	26757-080002	NUT, LOCK M8	1	1						
12	1	1N1700-41120	ROD,FORWARD/REVERSE	1	1						
13	1	22417-250200	PIN, COTTER 2.5X20	3	3						
14	1	1N1368-41010	ROD,CHANGE	1	1						
15	1	1N1361-41000	HEAD,CHANGE	1	1						
16	1	22351-050025	PIN, SPRING 5.0X25	1	1						
17	1	1N1100-41000	CIRCLIP 24.8,CHANGE	1	1						

Remarks

(1)REF.NO.3 L=32,NO.3-1 L=17

Fig.10. SIDE CLUTCH LEVER

10. SIDE CLUTCH LEVER

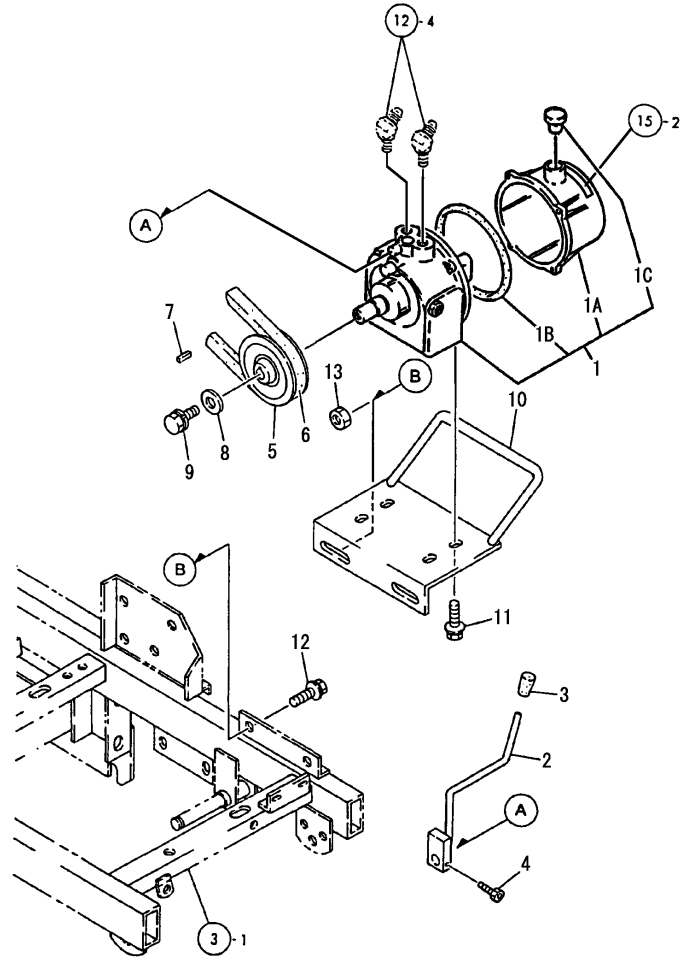


(A)=MCG131H
(B)=MCG131D
(C)=

(D)=
(E)=
(F)=

No.	Lev.	Parts No.	Description	Q'ty						I	R
				(A)	(B)	(C)	(D)	(E)	(F)		
1	1	1N1364-44000	LEVER R,SIDE CLUTCH	1	1						
2	1	1N1364-44020	LEVER L,SIDE CLUTCH	1	1						
3	1	1N1101-44010	GRIP 10,CLUTCH	2	2						
4	1	1N1210-53030	SPRING 21.5X78,TENS.	2	2						
5	1	1N1364-51000	WIRE,SIDE CLUTCH	2	2						
5-1	1	1N1364-51001	WIRE,SIDE CLUTCH	2	2						N
		(A=F011710) (B=F011686)									
5-2	1	1N1364-51002	WIRE,SIDE CLUTCH	2	2						N
		(A=F012542) (B=F012517)									
6	1	1N1215-51000	PIN 6X16,RIVET	2	2						
7	1	22137-060000	WASHER, 6	2	2						
8	1	22417-200160	PIN, COTTER 2.0X16	2	2						

Fig.11. HYDRAULIC PUMP



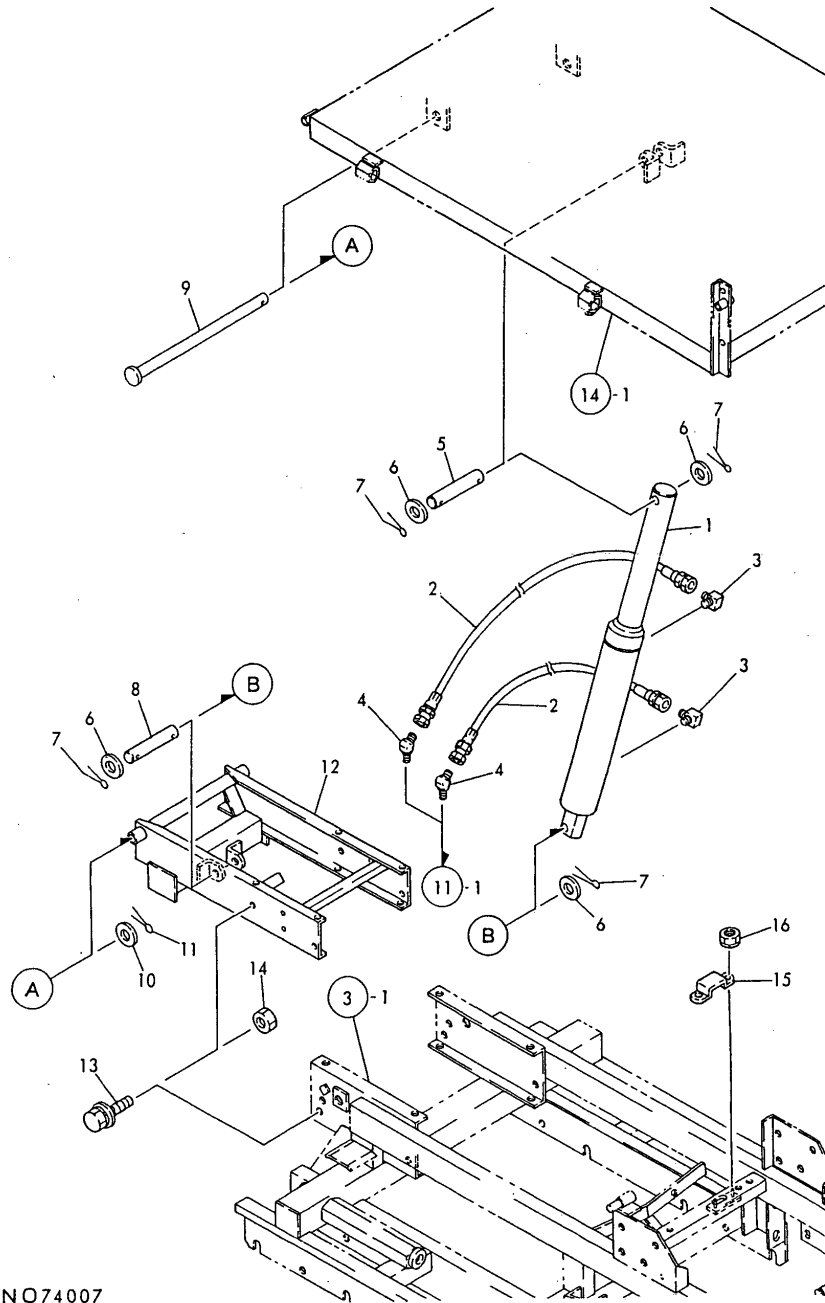
(A)=MCG131H
(B)=MCG131D
(C)=

(D)=
(E)=
(F)=

No.	Lev.	Parts No.	Description	Q'ty						I	R
				(A)	(B)	(C)	(D)	(E)	(F)		
1	1	7N1277-61000	HYDRAULIC PUMP PPH1.		1						
1A	2	1N1277-61020	TANK, HYDRAULIC PUMP		1						
1B	2	24321-001200	O-RING, 1AG120.0		1						
1C	2	1N1277-61031	CAP, BREATHER		1						
2	1	1N1361-45000	LEVER A, DUMP		1						
3	1	1N1216-44010	GRIP		1						
4	1	1N1285-61000	BOLT M5X10, HSH.		1						
5	1	1N1386-21000	V-PULLEY B3.5X1, PUMP		1						
6	1	25113-002100	V-BELT		1						
6-1	1	25113-002000	V-BELT, B20 (B=F010052)		1						S
7	1	22550-050180	KEY, 5X 18		1						
8	1	1N1210-16060	WASHER 11X35, RUBBER		1						
9	1	26013-100254	BOLT, M10X 25		1						
10	1	1N1364-45000	SEAT, PACKAGE		1						
11	1	26018-080204	BOLT M 8X 20		4						
12	1	26018-100254	BOLT M10X 25		2						
13	1	26367-100002	NUT, M10		2						

Fig.12. HYDRAULIC CYLINDER

12. HYDRAULIC CYLINDER



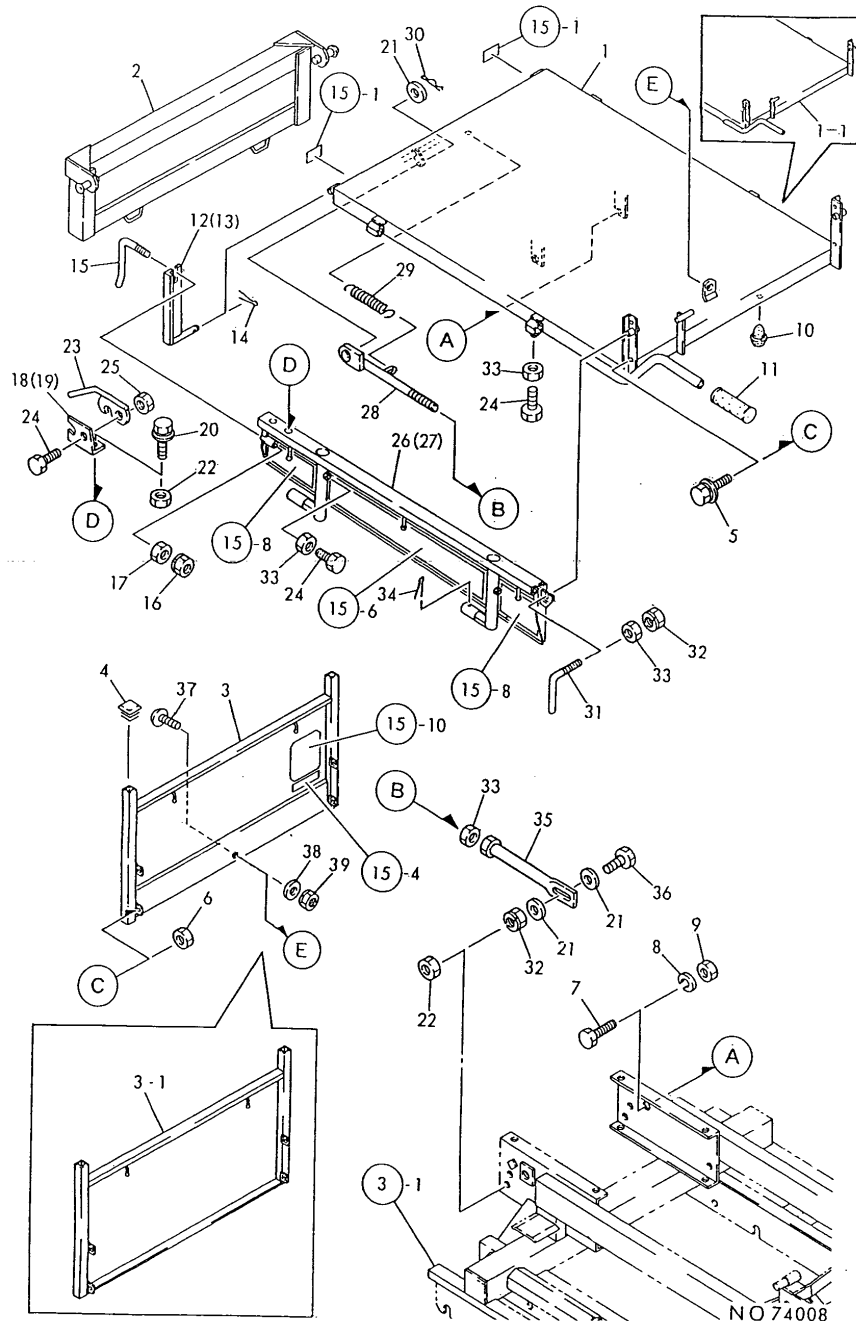
(A)=MCG131H
(B)=MCG131D
(C)=

(D)=
(E)=
(F)=

No.	Lev.	Parts No.	Description	Q'ty						I	R
				(A)	(B)	(C)	(D)	(E)	(F)		
1	1	1N1277-61010	CYLINDER, HYDRAULIC		1						
2	1	1N1364-61000	HOSE KA04 2.4M, HYDRO		2						
3	1	1N1090-61030	ELBOW		2						
4	1	1N1382-61000	ADAPTER 302304		2						
5	1	1N1277-61000	PIN, CYLINDER MTG.		1						
6	1	22137-180000	WASHER, 18		4						
7	1	22417-400250	PIN, COTTER 4.0X25		4						
8	1	1N1215-61001	PIN, CYLINDER MTG.		1						
9	1	1N1361-64190	SHAFT A, DUMP ROTATN		1						
10	1	22137-220000	WASHER, 22		1						
11	1	22417-400350	PIN, COTTER 4.0X35		1						
12	1	1N1364-31120	SUB-FRAME		1						
13	1	26018-100254	BOLT M10X 25		12						
14	1	26367-100002	NUT, M10		12						
15	1	1N1215-61020	BAND, HYDRAULIC HOSE		1						
15-1	1	1N1526-61040 (B=F011622)	HOSE BAND		1						R
16	1	26367-060002	NUT, M6		2						

Fig.13. PLATFORM CARRIER

13. PLATFORM CARRIER



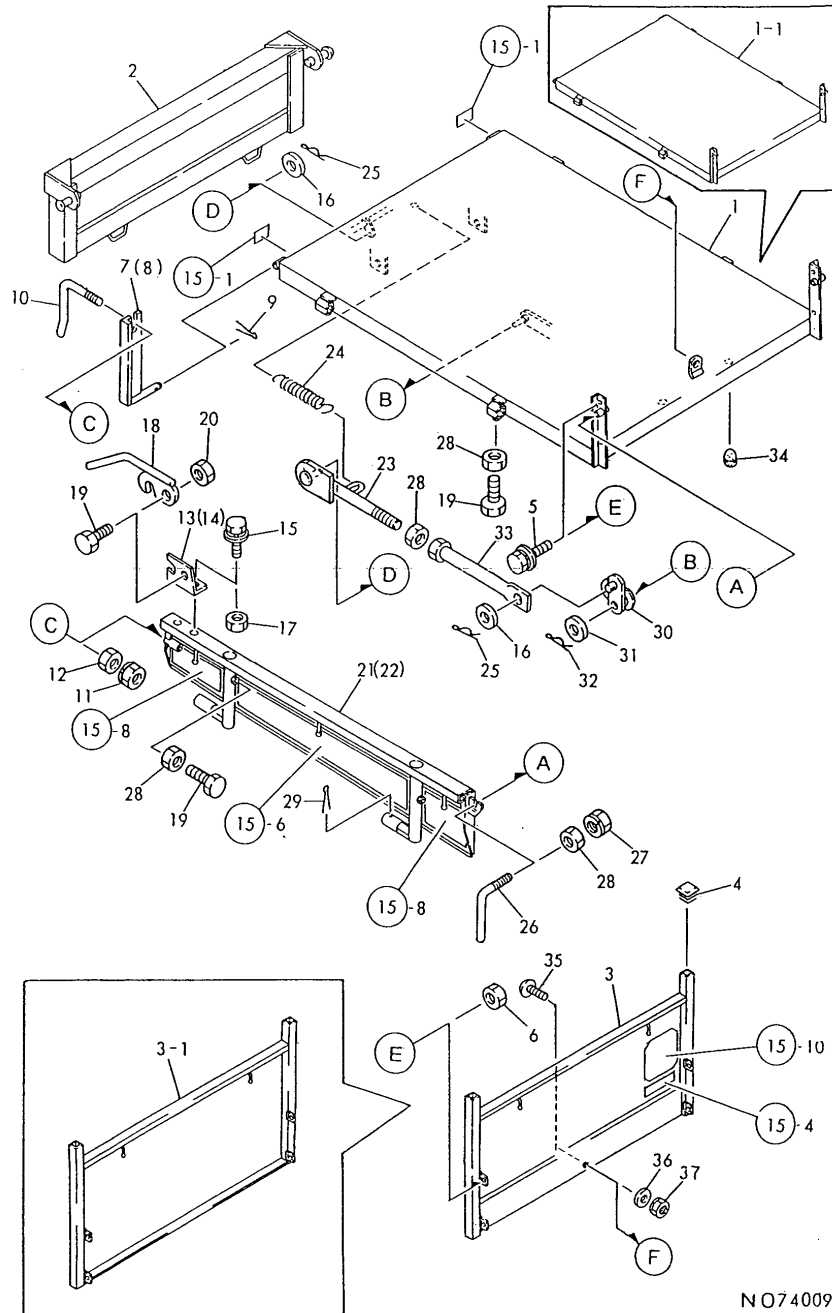
(A)=MCG131H
(B)=MCG131D
(C)=

(D)=
(E)=
(F)=

No.	Lev.	Parts No.	Description	Qty						I	R
				(A)	(B)	(C)	(D)	(E)	(F)		
1	1	1N1364-64030	CARRIER H,PLATFORM	1							
1-1	1	1N1364-64031	CARRIER H,PLTEFRORM	1							S
(A=F010413)											
2	1	1N1362-66050	PLATE A,FRONT	1							
3	1	1N1364-66000	PLATE,BACK	1							
3-1	1	1N1364-66001	PLATE,BACK	1							S
(A=F010413)											
4	1	1N1227-53010	BELLOWS,SQ.OIL PLUG	2							
5	1	26018-080204	BOLT M 8X 20	4							
6	1	26367-080002	NUT, M8	4							
7	1	26117-160454	BOLT, M16X 45 PLATED	2							
8	1	22217-160000	WASHER, SPRING 16	2							
9	1	26757-160002	NUT, LOCK M16	2							
10	1	1N1101-44040	RUBBER,STOPPER	2							
11	1	1N1094-44000	GRIP 27.2,LEVER	1							
12	1	1N1361-64150	FIXTURE A,SIDE PLATE	1							
13	1	1N1361-64160	FIXTURE B,SIDE PLATE	1							
14	1	22417-320250	PIN, COTTER 3.2X25	2							
15	1	1N1430-65000	HANDLE,SET	2							
16	1	26051-080002	NUT, M8	2							
17	1	26757-080002	NUT, LOCK M8	2							
18	1	1N1361-65040	FITTINGS A,FULCRUM	1							
19	1	1N1361-65050	FITTINGS B,FULCRUM	1							
20	1	26018-100254	BOLT M10X 25	4							
21	1	22137-100000	WASHER, 10	3							
22	1	26367-100002	NUT, M10	5							
23	1	1N1540-66240	LEVER,LOCK	2							
24	1	26117-100254	BOLT, M10X 25 PLATED	8							
25	1	26347-100002	NUT, M10	2							
26	1	1N1364-65030	PLATE L,SIDE	1							
27	1	1N1364-65000	BOARD R,SIDE	1							
28	1	1N1215-66251	ROD B,LOCK	1							
29	1	1N1210-53010	SPRING 18X105,TENSN	1							
30	1	22360-100000	PIN, SNAP 10	1							
31	1	1N1210-65090	HANDLE 90,SET	2							
32	1	26051-100002	NUT, M10	3							
33	1	26757-100002	NUT, LOCK M10	9							
34	1	22417-400400	PIN, COTTER 4.0X40	2							
35	1	1N1362-64140	ROD A	1							
36	1	26117-100454	BOLT M10X 45 PLATED	1							
37	1	26587-060162	SCREW, M6X16	1							Z
(A=F010413)											
38	1	22137-060000	WASHER, 6	1							Z
(A=F010413)											
39	1	26051-060002	NUT, M6	1							Z
(A=F010413)											

Fig.14. PLATFORM CARRIER

14. PLATFORM CARRIER



N O 7 4 0 0 9

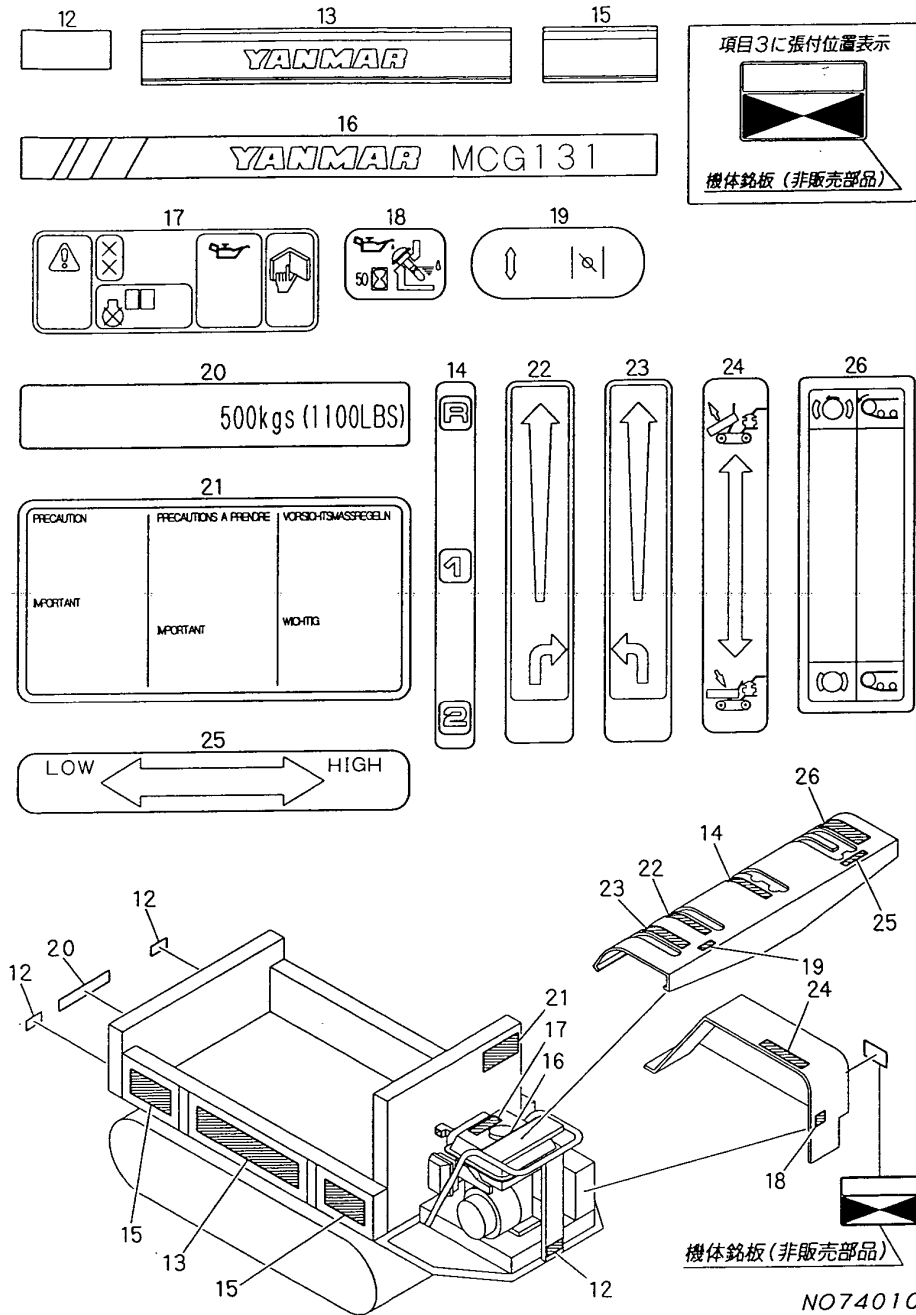
(A)=MCG131H
(B)=MCG131D
(C)=

(D)=
(E)=
(F)=

No.	Lev.	Parts No.	Description	Q'ty						I	R
				(A)	(B)	(C)	(D)	(E)	(F)		
1	1	1N1364-64000	CARRIER D,PLATFORM		1						
1-1	1	1N1364-64001	CARRIER D,PLATFORM		1						S
				(B=F010413)							
2	1	1N1362-66050	PLATE A,FRONT		1						
3	1	1N1364-66000	PLATE,BACK		1						
3-1	1	1N1364-66001	PLATE,BACK		1						S
				(B=F010413)							
4	1	1N1227-53010	BELLOWS,SQ.OIL PLUG		2						
5	1	26018-080204	BOLT M 8X 20		4						
6	1	26367-080002	NUT, M8		4						
7	1	1N1361-64150	FIXTURE A,SIDE PLATE		1						
8	1	1N1361-64160	FIXTURE B,SIDE PLATE		1						
9	1	22417-320250	PIN, COTTER 3.2X25		2						
10	1	1N1430-65000	HANDLE,SET		2						
11	1	26051-080002	NUT, M8		2						
12	1	26757-080002	NUT, LOCK M8		2						
13	1	1N1361-65040	FITTINGS A,FULCRUM		1						
14	1	1N1361-65050	FITTINGS B,FULCRUM		1						
15	1	26018-100254	BOLT M10X 25		4						
16	1	22137-100000	WASHER, 10		2						
17	1	26367-100002	NUT, M10		4						
18	1	1N1540-66240	LEVER,LOCK		2						
19	1	26117-100254	BOLT, M10X 25 PLATED		8						
20	1	26347-100002	NUT, M10		2						
21	1	1N1364-65030	PLATE L,SIDE		1						
22	1	1N1364-65000	BOARD R,SIDE		1						
23	1	1N1215-66251	ROD B,LOCK		1						
24	1	1N1210-53010	SPRING 18X105,TENSN		1						
25	1	22360-100000	PIN, SNAP 10		2						
26	1	1N1210-65090	HANDLE 90,SET		2						
27	1	26051-100002	NUT, M10		2						
28	1	26757-100002	NUT, LOCK M10		9						
29	1	22417-400400	PIN, COTTER 4.0X40		2						
30	1	1N1215-66280	LEVER,REAR STOP		1						
31	1	22137-120000	WASHER, 12		1						
32	1	22360-120000	PIN, SNAP 12		1						
33	1	1N1364-64040	ROD,DUNP LOCK		1						
34	1	1N1101-44040	RUBBER,STOPPER		2						W
				(B=F010946)							
35	1	26587-060162	SCREW, M6X16		1						Z
				(B=F010413)							
36	1	22137-060000	WASHER, 6		1						Z
				(B=F010413)							
37	1	26051-060002	NUT, M6		1						Z
				(B=F010413)							

Fig.15. LABELS

15. LABELS



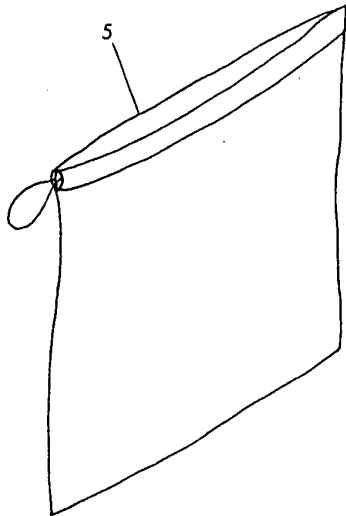
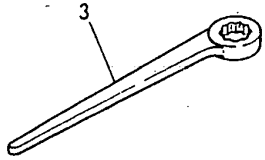
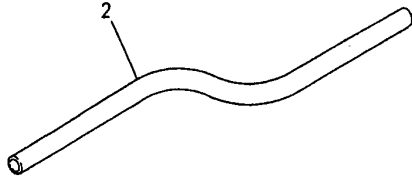
(A)=MCG131H
(B)=MCG131D
(C)=

(D)=
(E)=
(F)=

No.	Lev.	Parts No.	Description	Q'ty						I	R
				(A)	(B)	(C)	(D)	(E)	(F)		
12	1	1N1070-93050	TAPE, REFLECTIVE	3	3						
13	1	1N1277-93020	STICKER A, SIDE	2	2						
14	1	1N1296-93030	PLATE, CHANGE	1	1						
15	1	1N1362-93020	STICKER, SIDE	4	4						
16	1	1N1364-93010	NAMER MCG131, MODEL	1	1						
17	1	1N1362-93060	LABEL, PQ-1	1	1						
18	1	1N1362-93070	LABEL, PQ-2	1	1						
19	1	1N1362-93080	LABEL, PQ-3	1	1						
20	1	1N1362-93130	LABEL, PQ-8	1	1						
21	1	1N1362-93140	LABEL, PQ-9	1	1						
22	1	1N1362-93190	LABEL, PQ-14	1	1						
23	1	1N1362-93200	LABEL, PQ-15	1	1						
24	1	1N1362-93210	LABEL, PQ-16		1						
25	1	1N1362-83220	LABEL, PQ-17	1	1						
26	1	1N1362-93250	LABEL, PQ-20	1	1						

Fig.16. TOOLS & ACCESSORIES

16. TOOLS & ACCESSORIES



(A)=MCG131H
(B)=MCG131D
(C)=

(D)=
(E)=
(F)=

No.	Lev.	Parts No.	Description	Q'ty						I	R
				(A)	(B)	(C)	(D)	(E)	(F)		
1	1	1N1070-91010	FUNNEL	1	1						
2	1	1N1070-91020	HOSE	1	1						
3	1	1N1070-91030	WRENCH 24,OFFSET	1	1						
4	1	24761-060000	NIPPLE, GREASE MT6X1	2	2						
5	1	1N1070-91090	BAG,TOOL	1	1						

Parts No. Index

Parts No.	Fig. No.	Ref. No.
1A1470-40900	6	10
1N1070-91010	16	1
1N1070-91020	16	2
1N1070-91030	16	3
1N1070-91090	16	5
1N1070-93050	15	12
1N1090-61030	12	3
1N1094-44000	13	11
1N1100-41000	9	17
1N1101-35020	4	14
1N1101-44010	10	3
1N1101-44020	3	16
	9	2
1N1101-44030	7	2
1N1101-44040	13	10
	14	34
1N1110-42001	8	4
1N1140-35010	5	17
1N1151-53000	7	22
1N1151-53010	3	19
1N1185-53000	3	12
1N1190-45000	7	3
1N1210-16060	11	8
1N1210-35100	5	13
1N1210-53010	1	6
	13	29
	14	24
1N1210-53030	7	9
	10	4
1N1210-65090	13	31
	14	26
1N1215-51000	10	6
1N1215-61001	12	8
1N1215-61020	12	15
1N1215-66251	13	28
	14	23
1N1215-66280	14	30
1N1216-44010	11	3
1N1227-53010	13	4
	14	4
1N1240-35030	4	8
	5	8
1N1240-42050	7	6
1N1270-22080	2	2
1N1270-37010	4	13
1N1277-21000	2	1
1N1277-35000	4	3
1N1277-35011	4	4
1N1277-42260	7	21
1N1277-42270	6	8

Parts No.	Fig. No.	Ref. No.
1N1277-51010	6	13
1N1277-61000	12	5
1N1277-61010	12	1
1N1277-61020	11	1 A
1N1277-61031	11	1 C
1N1277-93020	15	13
1N1285-61000	11	4
1N1291-51030	6	19
1N1291-51031	6	19 -1
1N1291-58080	3	3
	6	5
1N1296-47040	6	15 A
1N1296-93030	15	14
1N1360-22090	7	10
	8	13
	9	10
1N1360-22130	8	1
1N1360-22141	8	6
1N1360-35000	5	16
1N1361-21010	2	6
1N1361-35011	5	4
1N1361-36000	5	3
1N1361-41000	9	15
1N1361-42130	7	15
1N1361-45000	11	2
1N1361-54001	3	8
1N1361-54030	3	13
1N1361-54040	3	11
1N1361-54050	3	20
1N1361-64150	13	12
	14	7
1N1361-64160	13	13
	14	8
1N1361-64190	12	9
1N1361-64371	3	15
1N1361-65040	13	18
	14	13
1N1361-65050	13	19
	14	14
1N1362-22020	1	1
1N1362-22040	1	7
1N1362-42110	7	17
1N1362-42200	7	18
1N1362-42210	7	14
1N1362-42220	7	19
1N1362-64140	13	35
1N1362-66050	13	2
	14	2
1N1362-83220	15	25
1N1362-93020	15	15

Parts No.	Fig. No.	Ref. No.
1N1362-93060	15	17
1N1362-93070	15	18
1N1362-93080	15	19
1N1362-93130	15	20
1N1362-93140	15	21
1N1362-93190	15	22
1N1362-93200	15	23
1N1362-93210	15	24
1N1362-93250	15	26
1N1364-16000	2	10
1N1364-31000	3	1
1N1364-31120	12	12
1N1364-41000	9	1
1N1364-41020	9	3
1N1364-41021	9	3 -1
1N1364-41030	8	8
1N1364-41050	7	1
1N1364-41070	7	5
1N1364-41110	6	7
1N1364-41120	7	20
1N1364-41160	7	12
1N1364-41170	8	9
1N1364-44000	10	1
1N1364-44020	10	2
1N1364-45000	11	10
1N1364-47000	6	1
1N1364-47030	6	9
1N1364-47031	6	9 -1
1N1364-51000	10	5
1N1364-51001	10	5 -1
1N1364-51002	10	5 -2
1N1364-58000	6	4
1N1364-58001	6	4 -1
1N1364-58020	3	2
1N1364-58050	3	5
1N1364-61000	12	2
1N1364-64000	14	1
1N1364-64001	14	1 -1
1N1364-64030	13	1
1N1364-64031	13	1 -1
1N1364-64040	14	33
1N1364-65000	13	27
	14	22
1N1364-65030	13	26
	14	21
1N1364-66000	13	3
	14	3
1N1364-66001	13	3 -1
	14	3 -1
1N1364-93010	15	16

Parts No.	Fig. No.	Ref. No.
1N1366-53000	9	7
1N1368-41010	9	14
1N1382-61000	12	4
1N1386-21000	11	5
1N1430-22070	1	5
1N1430-65000	13	15
	14	10
1N1431-52000	6	12
1N1526-61040	12	15 -1
1N1540-66240	13	23
	14	18
1N1700-41120	9	12
1N3500-51010	6	18
1N3510-42090	8	12
22137-060000	8	10
	10	7
	13	38
	14	36
22137-080000	2	12
	7	7
	8	2
	9	8
22137-100000	2	8
		17
	5	18
	9	5
	13	21
	14	16
22137-120000	3	17
	14	31
22137-160000	1	8
	4	9
	5	9
22137-180000	12	6
22137-220000	12	10
22217-160000	4	10
		17
	5	10
	13	8
22242-000150	1	3
22242-000160	1	9
22242-000200	4	6
	5	6
22252-000350	1	2
22351-050025	9	16
22360-080000	7	8
	8	3
	9	9
22360-100000	13	30
	14	25

Parts No. Index

Parts No.	Fig. No.	Ref. No.
22360-120000	14	32
22417-200160	8	11
	10	8
22417-250200	7	13
	8	7
	9	13
22417-250250	5	19
22417-320250	13	14
	14	9
22417-400250	12	7
22417-400350	12	11
22417-400400	13	34
	14	29
22550-050180	11	7
22551-050250	2	7
24101-060044	4	5
	5	5
24104-062024	1	4
24321-001200	11	1 B
24421-204208	4	7
	5	7
24761-060000	16	4
25113-002000	11	6 -1
25113-002100	11	6
25123-003001	2	5
25123-003101	2	4
26013-100254	11	9
26014-060259	6	17
26018-060164	7	4
26018-060204	3	14
26018-080164	2	3
26018-080204	3	6
	11	11
	13	5
	14	5
26018-100204	7	16
26018-100254	2	14
	3	9
	6	2
	11	12
	12	13
	13	20
	14	15
26051-060002	13	39
	14	37
26051-080002	2	13
	6	11
	13	16
	14	11
26051-100002	2	9

Parts No.	Fig. No.	Ref. No.
26051-100002	2	18
	13	32
	14	27
26052-100002	5	14
26117-060084	4	12
	5	12
26117-080452	2	11
26117-100254	13	24
	14	19
26117-100454	13	36
26117-100504	9	4
26117-100804	2	16
26117-160454	13	7
26117-161504	4	15
26347-100002	9	6
	13	25
	14	20
26347-120002	3	18
26367-060002	3	4
	6	6
	12	16
26367-080002	3	7
	13	6
	14	6
26367-100002	2	15
	3	10
	6	3
	11	13
	12	14
	13	22
	14	17
26587-060162	13	37
	14	35
26717-100002	6	14
26717-160002	4	11
	5	16
26757-080002	7	11
	8	5
		14
	9	11
	13	17
	14	12
26757-100002	5	15
	13	33
	14	28
26757-160002	13	9
7N1277-35001	4	2
7N1277-35011	4	1
7N1277-61000	11	1

Parts No.	Fig. No.	Ref. No.
7N1361-36001	5	2
7N1361-36011	5	1

Parts No.	Fig. No.	Ref. No.
-----------	----------	----------